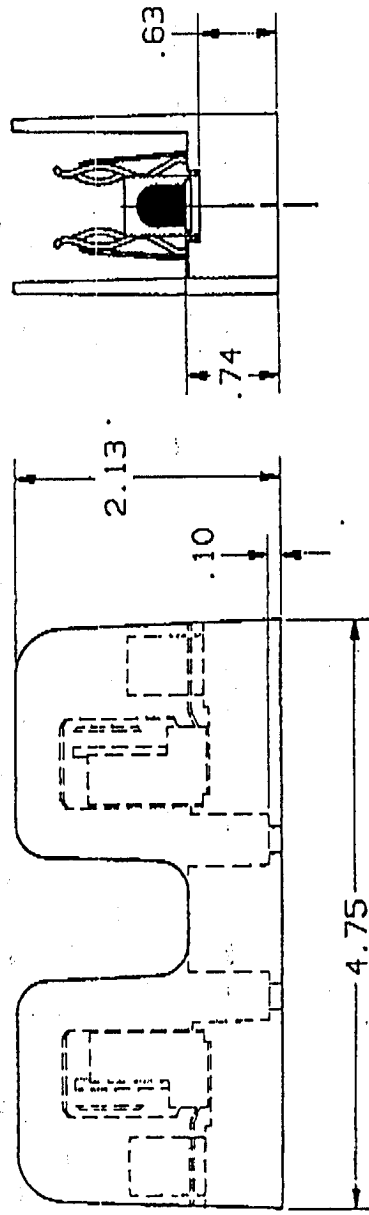
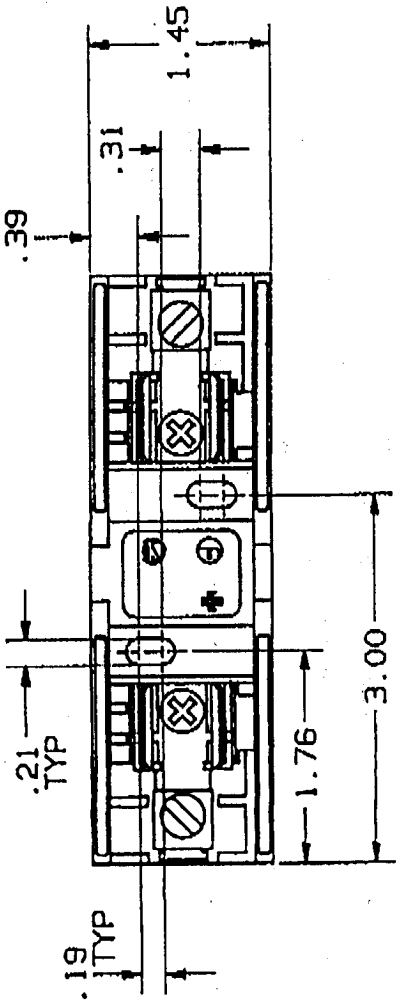


REV	DESCRIPTION	DATE	APPO
0	RELEASED	7/13/92	7/1



REFERENCE

JUN 17 1992

- P/N 20601 CU-AL
- P/N 20606(R) CU-AL (SPRF)
- P/N 20656(R) CU ONLY (SPRF)
- ADD 'R' FOR CLASS R

NOTES UNLESS OTHERWISE SPECIFIED - ALL DIMENSIONS ARE IN INCHES - STAMP OR ETCH ORIG. NO. ON PART - REMOVE ALL BURRS AND SHARP EDGES - TOLERANCES: XXXX+.0005; XXXX-.005; XX+.01; X+.01; ANGLES 40°30'	MATERIAL	GOULD SHAWMUT GOULD SHAWMUT P. O. BOX 729 MARBLE FALLS, TX 78654
	FINISH	PRODUCT INFO
THIS DRAWING AND ALL INFORMATION THEREON IS THE PROPERTY OF GOULD. IS CONFIDENTIAL. MUST NOT BE COPIED OR MADE PUBLIC UNLESS AUTHORIZED AND IS SUBJECT TO RETURN ON DEMAND.	SIGNATURES	TITLE
	DATE	DWG NO
DRN: <i>Challenger</i> 7/1/92	0580256	FUSE BLOCK, 250V-60A 1 POLE BOX CONNECTOR
CHKD: <i>Challenger</i> 7/1/92	FILE NO	00
ENGR:	SCALE	1/1
APPRO: <i>Challenger</i> 7/1/92	SHEET	1 of 1
REV OR 5TH DRG		

1. MATERIAL: POLYCARBONATE.
 NOTES: UNLESS OTHERWISE SPECIFIED