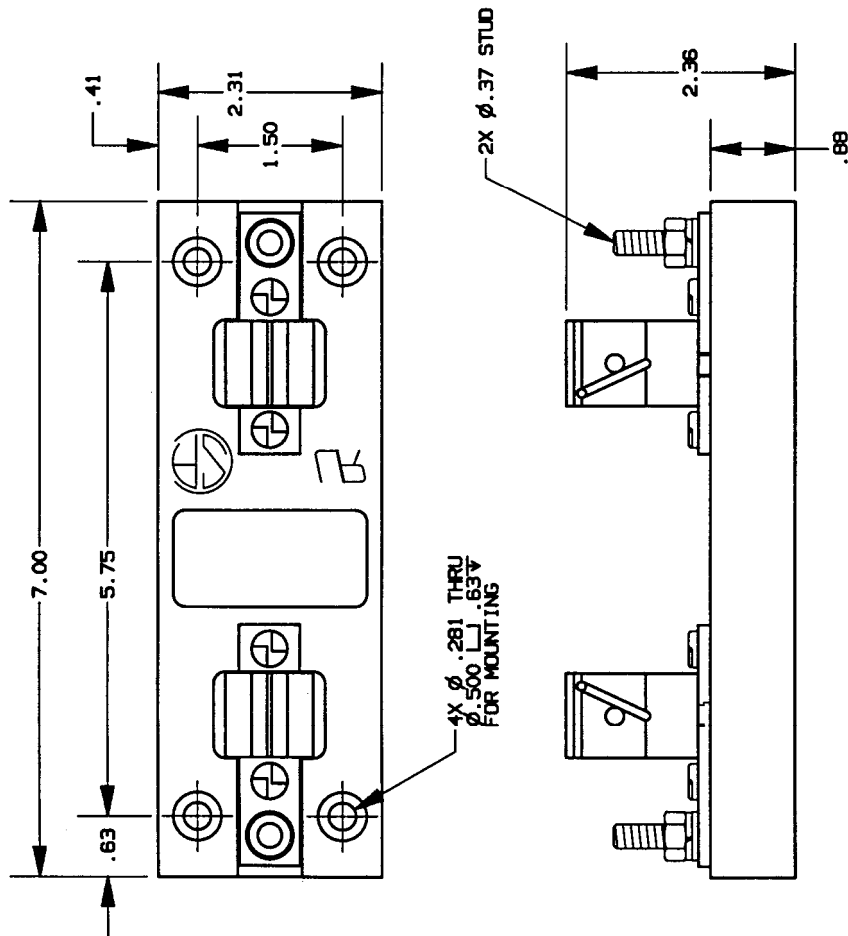


CONTROL No: 9103

REV DATE ECO DESCRIPTION BY CK/APP



NOTES:

1. MATERIAL: BASE - PHENOLIC RATING - 150°C RTI CONNECTOR - STEEL STUD W/ TIN PLATED COPPER ALLOY BUSS AND CLIP

P/N	FUSE CLASS	RMS SYM RATING	TORQUE (IN-LBS)	CONNECTOR TYPE	WIRE	UL FILE NO.	UL GUIDE NO.	CSA REPORT NO.
61016J	J	200K	72	STUD-LUG	60/75	E52283	I2LT2	LR32169



GOULD 374 MERRIMAC STREET NEWBURYPORT, MA 01950

PRODUCT MANAGER

DESIGN ENGINEER

SIGN: *Michael Smith*

SIGN: *John M. Boyer*

DATE: 5-27-97

DATE: 5/27/97

FUSE BLOCK, 600V-100A, 1 POLE CLASS J

OUTLINE DIMENSIONS NOT TO BE USED FOR PRODUCTION

700276