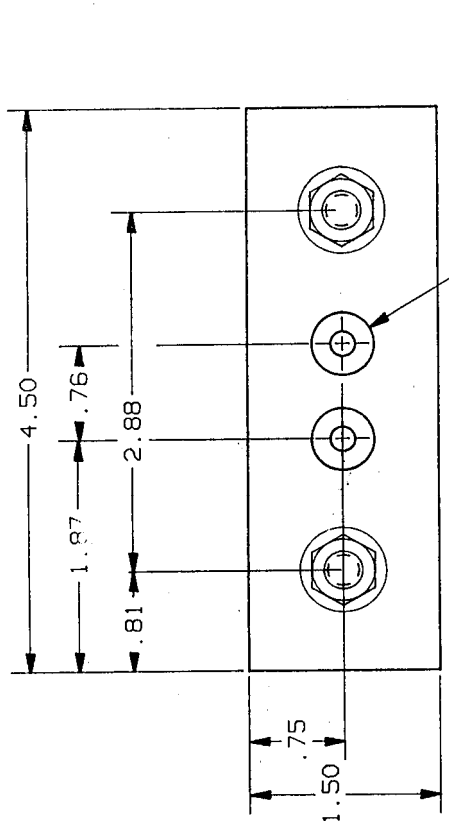
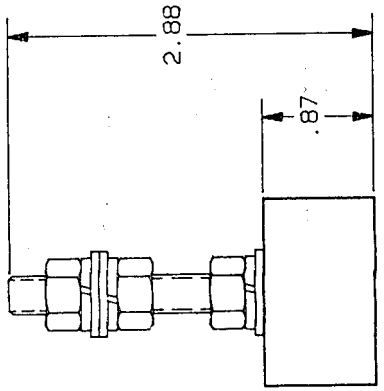
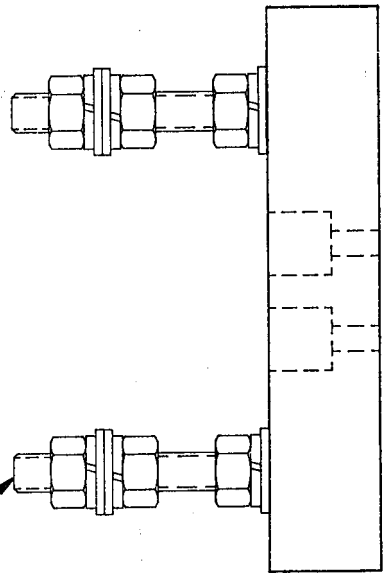


REV	DATE	ECO	DESCRIPTION	BY	CHK
U0	6/93		UNRELEASED	m/Go	



5/16-18 UNC STUD  
 $\varnothing .50 \text{ L } .50 \nabla$   
 $\varnothing .20 \text{ THRU}$   
 FOR MOUNTING  
 2X



CONTROLLED COPY  
 ISSUED TO Newburgport  
 DATE 6/9/93

CAT/N P243HL  
 P/N P243HL

<b>GOULD</b> HOLDING INC. P.O. BOX 728 HABLE FALLS, TN 37073 CIRCUIT PROTECTION DIV.	DRAWN BY: KDS DATE: 6/93 UNIT: INCH	CHECKED BY: GHO DATE: 6/93 SCALE: NONE	TOLERANCE TO BE APPLIED UNLESS OTHERWISE SPECIFIED: .0004, .00051, .0004, .00051, .004, .011. UNLESS OTHERWISE SPECIFIED: UNLESS OTHERWISE SPECIFIED DIMENSIONS APPLY AFTER PLATING UNLESS SPECIFIED ALL SURFACES TO BE 125 $\mu$ UNLESS OTHERWISE SPECIFIED THIS DRAWING AND ALL INFORMATION THEREON IS THE PROPERTY OF GOULD INC. IT IS LOANED TO YOU BY PERMISSION OF GOULD INC. IT IS NOT TO BE REPRODUCED OR MADE PUBLIC OR COPIED UNLESS AUTHORIZED.
	REFDOC:	IDENTIFICATION NO. 1 REVISION	05B0436 U0

1. MATERIAL COMPOSITION:  
 BASE - PHENOLIC  
 HARDWARE - PLATED COPPER ALLOY  
 NOTES: UNLESS OTHERWISE SPECIFIED