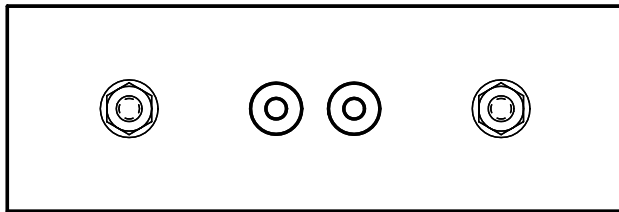
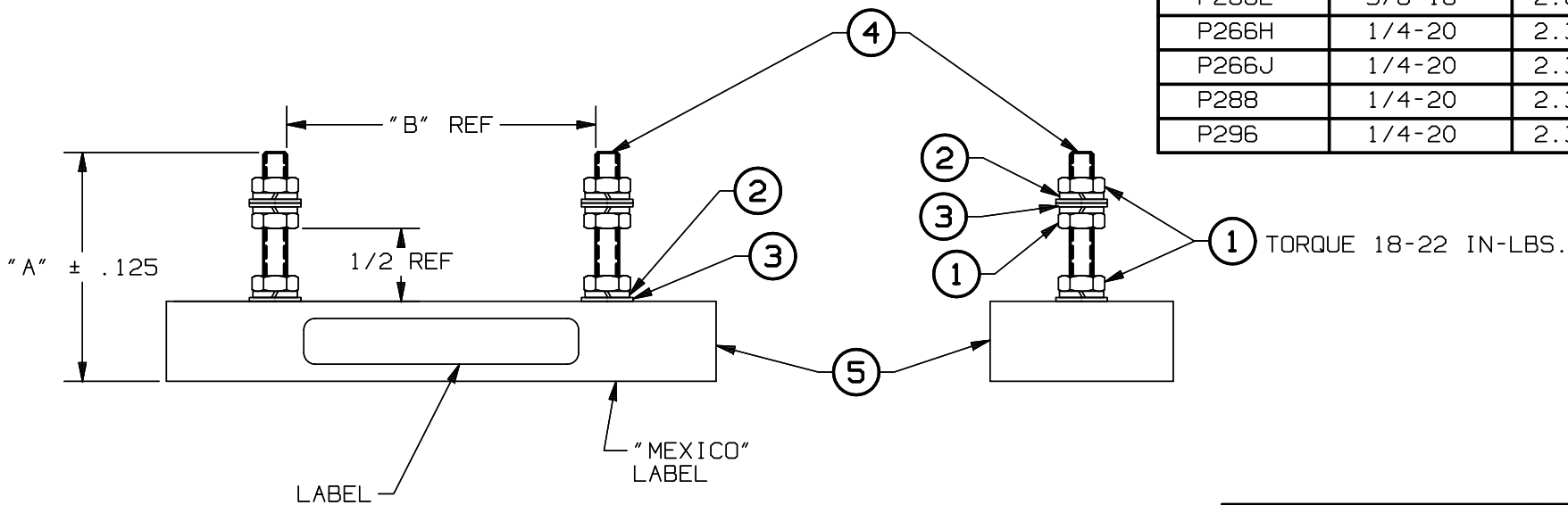


REV	DATE	ECO	DESCRIPTION	BY	CK
00	4/11/95		RELEASED	GO	
01	5/1/95	1688	REV "B" DIM TO REF		



GOULD P/N	STUD SIZE	DIMENSIONS	
		"A" ± .125	"B"
P243	1/4-20	2.38	2.13
P243H	5/16-18	2.38	2.57
P243HL	5/16-18	2.88	2.57
P266A	3/8-16	2.88	3.69
P266C	1/4-20	2.88	2.91
P266F	3/8-16	2.88	4.72
P266G	1/4-20	2.38	4.00
P266L	3/8-16	2.88	4.28
P266H	1/4-20	2.38	4.28
P266J	1/4-20	2.38	3.90
P288	1/4-20	2.38	5.25
P296	1/4-20	2.38	4.63



P/N P243
P243H
P243HL
P266A
P266C
P266F
P266G
P266L
P266H
P266J
P288
P296

NOTE
1. MUST WITHSTAND FOR 1 SECOND, WITHOUT BREAKDOWN, THE APPLICATION OF 3600V AC BETWEEN LIVE PARTS AND EXPOSED NON-CURRENT-CARRYING-METAL PARTS.

		<small>GOULD INC. P.O. BOX 726 MARBLE FALLS, TX 78654</small>		<small>TOLERANCE TO BE APPLIED UNLESS OTHERWISE SPECIFIED: .XXX±.0005; .XXX±.005; .XXX±.01; .XX±.02; X/XX±1/32</small>	
<small>CIRCUIT PROTECTION DIV.</small>		<small>UNSPECIFIED ANGLES±1°, SPECIFIED ANGLES±0°30'</small>		<small>DIMENSIONS APPLY AFTER PLATING</small>	
<small>DRAWN BY:</small> CEP	<small>DATE:</small> 4/95	<small>INIT. REL.</small>	<small>BREAK ALL SHARP EDGES</small>		
<small>CHECKED BY:</small>	<small>DATE:</small>	<small>SCALE:</small> NONE	<small>PROPERTY OF GOULD INC. AND IS SUBJECT TO RETURN ON DEMAND. THIS INFORMATION IS CONFIDENTIAL AND MUST NOT BE MADE PUBLIC OR COPIED UNLESS AUTHORIZED.</small>		
<small>DESCRIPTION</small> PANEL ASSEMBLY, FORM 101			<small>IDENTIFICATION NO. & REVISION</small> 31B0515 01		