

# URR/URGL/URU/URGM SEMICONDUCTOR PROTECTION FUSES



## PROTISTOR® FUSES

690V

URR/URGL/URU/URGM from 75 to 800A

SIZES: 36 X 55 & 2 X 36 X 55

### Features/Benefits

- **Extremely high Interrupting rating Fuses:** Protection of power Semiconductors according to IEC 269.1 and 4
- **690V Voltage Rating** according to IEC 33
- **gR Class** Ratings from 75 to 800A according to VDE 636-23 and IEC 269.4
- **Three Models** complying with BS 88-4
  - without indicator
  - with external trip-indicator
  - with built in trip-indicator



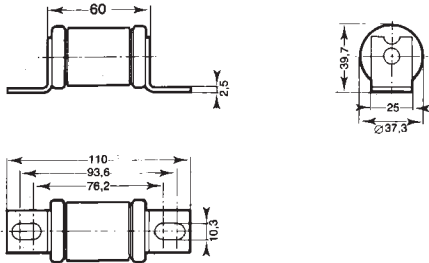
### APPLICATIONS DATA

Voltage rating U <sub>N</sub> (V)	Size	Class	Current rating I <sub>N</sub> (A)	Melting I <sub>2t</sub> @ 1 ms I <sub>2t</sub> <sub>p</sub> (A <sup>2</sup> s)	Total clearing I <sup>2</sup> t @ U <sub>N</sub> A <sup>2</sup> s		Watt losses		Tested interrupting rating
					I <sub>p</sub> ≤ 50 I <sub>N</sub>	I <sub>p</sub> > 50 I <sub>N</sub>	0.8 I <sub>N</sub>	I <sub>N</sub>	
690V	36x55	URR	75	350	1800	2000	9.7	19.5	200 kA @690V
			110	1180	6000	6700	11.3	22.8	
			200	3900	18500	20500	21.8	41.4	
			250	8760	41000	46000	23.6	44.1	
		URGL	50	180	860	990	7.3	14.0	
			65	335	1600	1840	8.8	17.1	
			85	480	3450	4000	12.2	23.5	
			90	720	4100	4700	13.2	25.5	
			150	2880	12600	14500	18.9	35.3	
			180	5350	22500	25500	19.1	35.7	
	URU	200	9510	40000	46000	17.7	33.1	200 kA @690V	
		250	21400	97000	110000	18.7	34.5		
		280	29100	125000	145000	20.3	38.0		
		315	38100	157000	180000	22.7	42.6		
	2x36x55	URU	355	48200	190000	215000	25.9	48.5	200 kA @690V
			400	72000	265000	305000	26.7	50.0	
			200	4700	24000	27000	18.4	33.0	
		URGM	235	6920	34500	39000	21.0	37.6	
			400	21200	100000	110000	34.8	62.3	
			500	35000	164000	184000	47.2	88.2	
URGM	630	97300	515000	575000	41.1	73.2	200 kA @690V		
	175	2880	13800	16000	24.7	47.6			
	300	13700	60000	68000	31.5	59.0			
	325	21400	90000	102000	30.0	54.0			
	355	25200	106000	120000	33.1	62.0			
	450	65600	300000	340000	34.6	63.8			
500	85600	390000	440000	37.4	69.0				
630	152000	630000	720000	45.4	85.2				
710	193000	760000	860000	51.8	97.0				
800	282000	1.06 10 <sup>6</sup>	1.22 10 <sup>6</sup>	53.4	100.0				

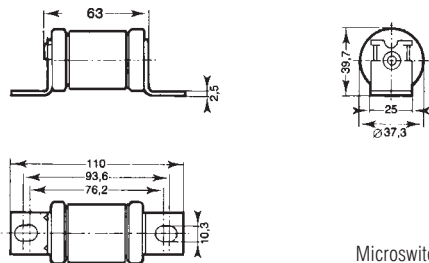
# URR/URGL/URU/URGM SEMICONDUCTOR PROTECTION FUSES

## PART NUMBERS

### CP 36x55 - Without trip-indicator

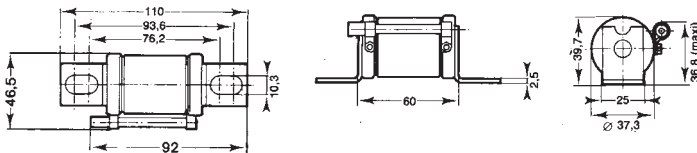


### CP 36x55 - With built-in trip-indicator



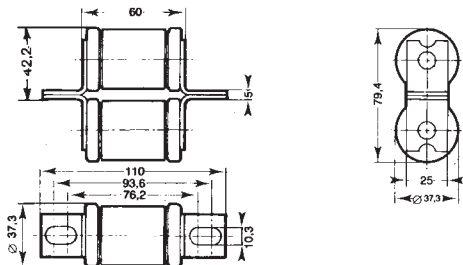
Microswitch MC 36 GR 2.5 N - Ref. P 092496

### CP 36x55 - With separated trip-indicator

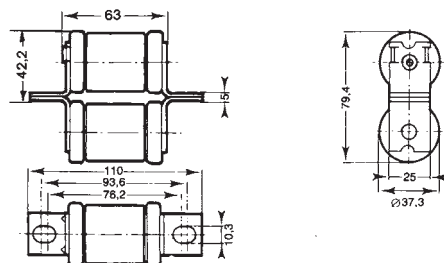


Microswitch MC 6.3 GR 2.5 N - Ref. Y 310015

### CP 2x36x55 - Without trip-indicator



### CP 2x36x55 - With built in trip-indicator



Microswitch MC 36 GR 2.5 N - Ref. P 092496

SIZE	CATALOG NO.	REF#
36x55	6.9 URGL 36/50	X 097103
	6.9 URGL 36/65	H 097113
	6.9 URR 36/75	H 097136
	6.9 URGL 36/85	M 097163
	6.9 URGL 36/90	N 097164
	6.9 URR 36/110	P 097166
	6.9 URGL 36/150	Q 097166
	6.9 URGL 36/180	R 097167
	6.9 URR 36/200	S 097168
	6.9 URGL 36/200	T 097169
	6.9 URR 36/250	V 097170
	6.9 URGL 36/250	W 097171
	6.9 URGL 36/280	A 097175
	6.9 URGL 36/315	B 097176
6.9 URGL 36/355	C 097177	
6.9 URGL 36/400	D 097178	

SIZE	CATALOG NO.	REF#
36x55	6.9 URGL 36 T 50	N 097210
	6.9 URGL 36 T 65	K 097230
	6.9 URR 36 T 75	H 099965
	6.9 URGL 36 T 85	M 097255
	6.9 URGL 36 T 90	N 097256
	6.9 URR 36 T 110	R 099973
	6.9 URGL 36 T 150	Z 082178
	6.9 URGL 36 T 180	P 097257
	6.9 URR 36 T 200	A 085560
	6.9 URGL 36 T 200	R 097259
	6.9 URR 36 T 250	W 097263
	6.9 URGL 36 T 250	X 097264
	6.9 URGL 36 T 280	Y 097265
	6.9 URGL 36 T 315	Z 097266
	6.9 URGL 36 T 355	A 097267
	6.9 URGL 36 T 400	C 097269

SIZE	CATALOG NO.	REF#
36x55	6.9 URGL 36 P 90	H 097182
	6.9 URR 36 P 110	J 097183
	6.9 URGL 36 P 150	K 097184
	6.9 URGL 36 P 180	L 097185
	6.9 URR 36 P 200	M 097186
	6.9 URGL 36 P 200	N 097187
	6.9 URR 36 P 250	P 097188
	6.9 URGL 36 P 250	Q 097189
	6.9 URGL 36 P 280	R 097190
	6.9 URGL 36 P 315	V 097193
	6.9 URGL 36 P 355	Y 097196
	6.9 URGL 36 P 400	M 097209

SIZE	CATALOG NO.	REF#
2x36x55	6.9 URGM 236/175	D 097270
	6.9 URU 236/200	F 097272
	6.9 URU 236/235	J 097275
	6.9 URGM 236/300	K 097276
	6.9 URGM 236/325	R 097282
	6.9 URGM 236/355	S 097283
	6.9 URU 236/400	T 097284
	6.9 URGM 236/450	Y 097288
	6.9 URGM 236/500	Z 097289
	6.9 URU 236/500	A 097290
	6.9 URGM 236/630	B 097291
	6.9 URU 236/630	R 097351
	6.9 URGM 236/710	S 097352
6.9 URGM 236/800	Y 097357	

SIZE	CATALOG NO.	REF#
2x36x55	6.9 URGM 236 T 175	F 097456
	6.9 URU 236 T 200	G 097457
	6.9 URU 236 T 235	A 082179
	6.9 URGM 236 T 300	S 085553
	6.9 URGM 236 T 325	J 097459
	6.9 URGM 236 T 355	N 097463
	6.9 URU 236 T 400	P 097464
	6.9 URGM 236 T 450	Q 097465
	6.9 URGM 236 T 500	R 097466
	6.9 URU 236 T 500	S 097467
	6.9 URGM 236 T 630	V 097469
	6.9 URU 236 T 630	W 097470
	6.9 URGM 236 T 710	C 097476
6.9 URGM 236 T 800	D 097477	