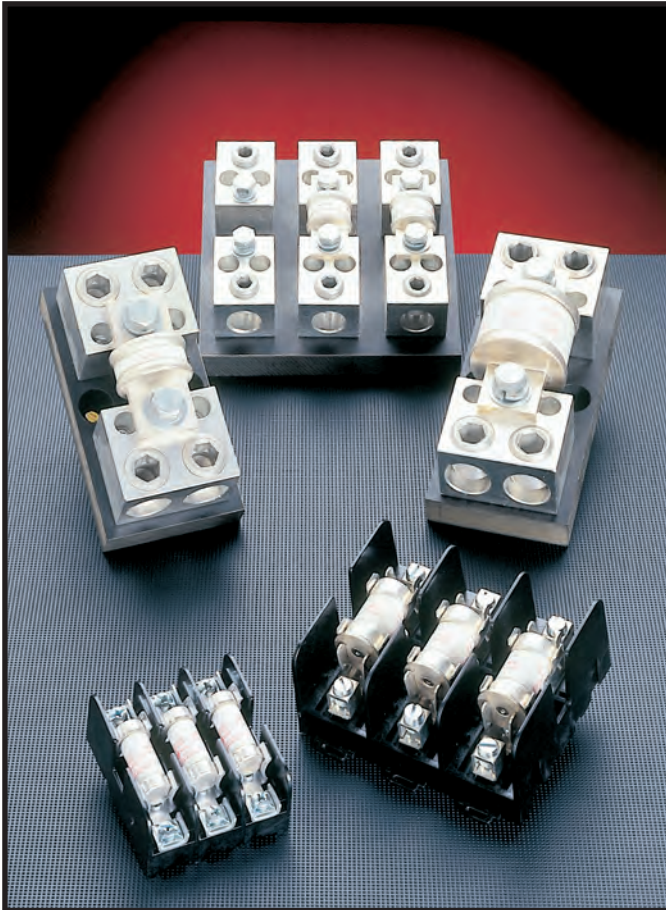


# CLASS T

## 300 & 600 VOLT/FUSE BLOCKS



### CLASS T FUSE BLOCKS

Ferraz Shawmut Class T Fuse Blocks accommodate Class T fuses up to 600A. Insulators are either the durable, glass-filled polycarbonate (GFPC) or phenolic with verified dielectric strength in excess of 2500V. Ferraz Shawmut is the only manufacturer to offer Class T blocks with copper connectors.

### FEATURES/BENEFITS

- Unique integral DIN rail adapters for 600V, 30 & 60A blocks
- Full barrier design (30 & 60A) increases pole to pole safety
- Unique adder-block design (30 & 60A) for design flexibility
- Spring reinforcing standard for all 30 & 60A clips
- Features high conductivity copper alloy fuse clips
- Cool running high amperage (100 - 600A) connectors
- Copper connectors available 30 - 600A

### RECOMMENDED FUSE USAGE

**Class T Blocks (300V)** . . . . . use with **A3T**  
**Class T Blocks (600V)** . . . . . use with **A6T**

### Ratings

- 300VAC:  
30A, 60A, 100A,  
200A, 400A, 600A
- 600VAC:  
30A, 60A, 100A,  
200A, 400A, 600A
- Short Circuit  
Current Rating:  
200KA

### Approvals

- All fuse blocks meet the requirements of UL Std. 512
- UL Listed, Guide IZLT, File E52283
- UL Recognized Component Guide IZLT2, File E52283
- CSA Certified Class 6225, File 32169

### CLIP & CONNECTOR TYPES

#### SPRING REINFORCED 30A & 60A CLIPS

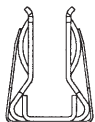
300V - 30A  
600V - 30A



300V - 60A



600V - 60A

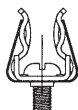


#### CONNECTORS FOR SPRING REINFORCED 30A & 60A CLIPS

30A - 60A  
BOX



30A - 60A  
SCREW



30A - 60A  
PRESSURE PLATE

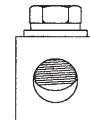


#### CONNECTORS

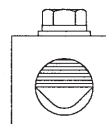
100A BOX  
SIDE CLIP



100A BOX

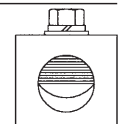


200A BOX

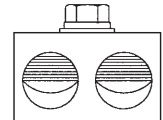


#### CONNECTORS

400A BOX

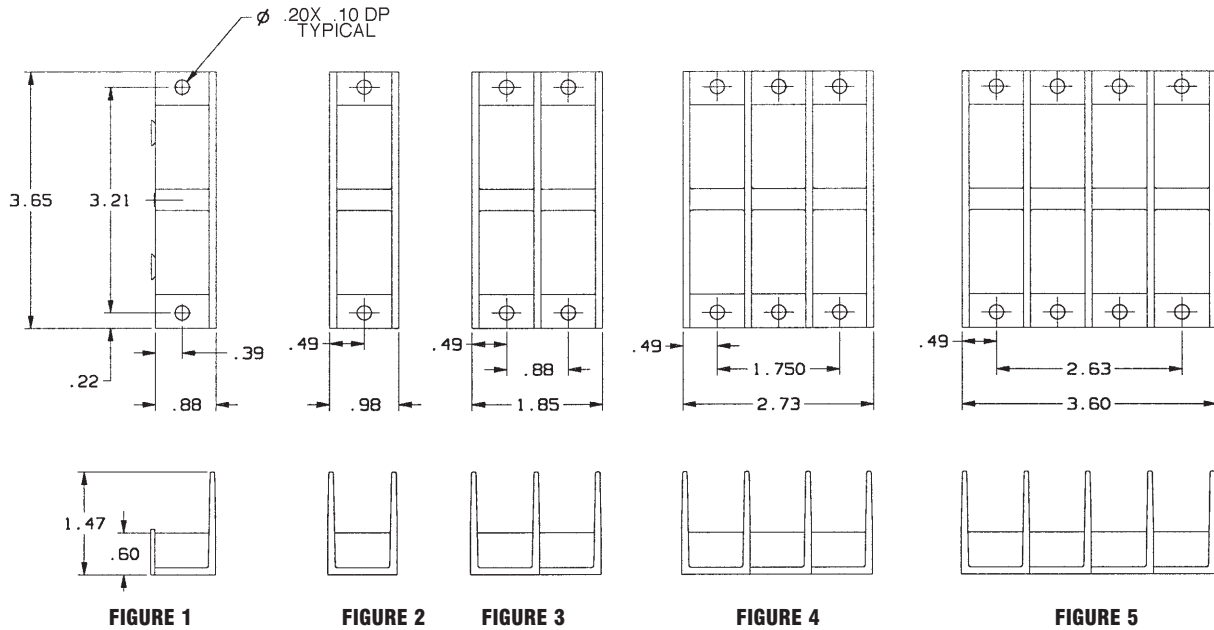


600A BOX



# CLASS T

## 300 VOLT/FUSE BLOCKS



### 300 Volt, 30 & 60 Ampere Class T Fuse Blocks

AMPERE RATING	POLES	CONNECTOR		CATALOG NUMBER	FIG.	CONNECTOR TORQUE In - lb
		TYPE	WIRE RANGE	SPRING REINFORCED		
30 GFPC INSULATOR	ADDER	BOX	Al/Cu #2-14	30305T	1	35
	1			30306T	2	
	2			30307T	3	
	3			30308T	4	
	4			30309T	5	
	ADDER	SCREW	Cu #10-14	30315T	1	20
	1			30316T	2	
	2			30317T	3	
	3			30318T	4	
	4			30319T	5	
	ADDER	PRESSURE PLATE	Cu #10-14	30325T	1	20
	1			30326T	2	
	2			30327T	3	
	3			30328T	4	
	4			30329T	5	
	ADDER	BOX	Cu* #4-14	30355T	1	35
1	30356T			2		
2	30357T			3		
3	30358T			4		
4	30359T			5		
60 GFPC INSULATOR	ADDER	SCREW	Cu #10-14	30615T**	1	20
	1			30616T**	2	
	2			30617T**	3	
	3			30618T**	4	
	4			30619T**	5	
	ADDER	BOX	Al/Cu #2-14	30605T	1	45
	1			30606T	2	
	2			30607T	3	
	3			30608T	4	
	4			30609T	5	
	ADDER	BOX	Cu* #4-14	30655T	1	45
	1			30656T	2	
2	30657T			3		
3	30658T			4		
4	30659T			5		

Recommended base mounting screws: #10 (.190" dia.)



**Note:** \* Fuse blocks have copper box connectors and clips and are for copper wires only. These are specifically designed with the same coefficient of expansion as copper wire for improved heat cycling and meet or exceed OEM "no aluminum" specifications.

\*\* UL Component Recognized

# CLASS T

## 300 VOLT/FUSE BLOCKS

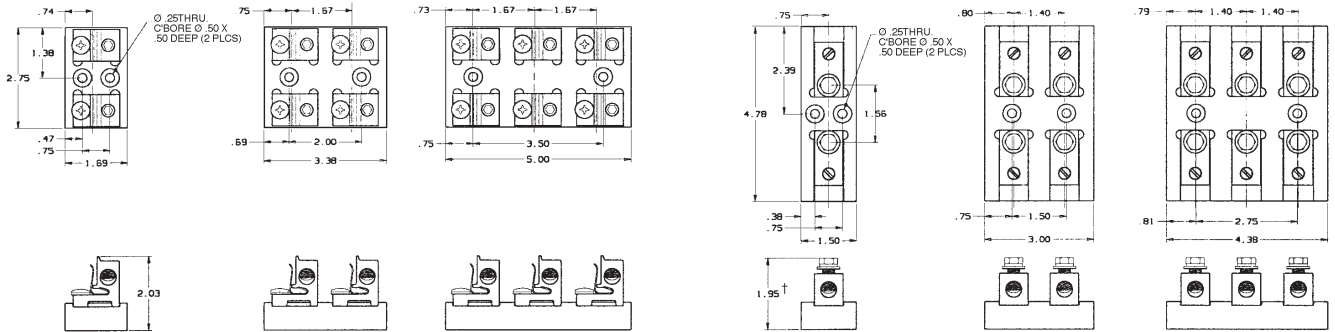


FIGURE 1

FIGURE 2

FIGURE 3

FIGURE 4

FIGURE 5

FIGURE 6

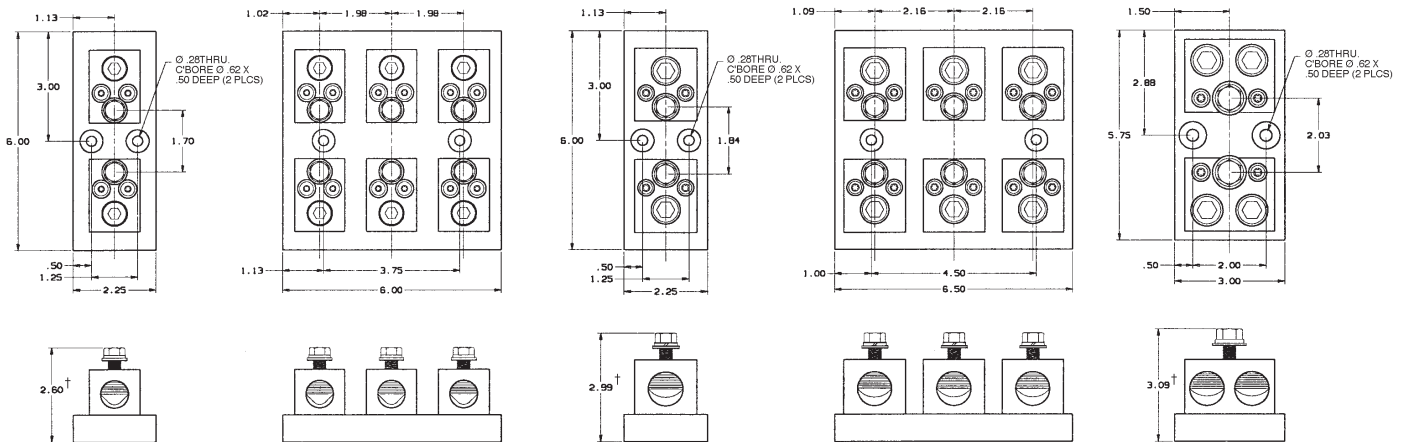


FIGURE 7

FIGURE 8

FIGURE 9

FIGURE 10

FIGURE 11

### 300 Volt, 100, 200, 400 & 600 Ampere Class T Fuse Blocks

AMPERE RATING	POLES	CONNECTOR		CATALOG NO.	FIG.	TORQUE (IN-LBS)	
		TYPE	WIRE RANGE			CONNECTOR	FUSE BOLT
100 PHENOLIC INSULATOR	1	BOX SIDE-CLIP	Al/Cu	31031T	1	120	-
	2		Al/Cu	31032T	2		
	3		Al/Cu	31033T	3		
	1	BOX	Cu*	31001T	4	50	72
	2		Cu*	31002T	5		
	3		Cu*	31003T	6		
200 PHENOLIC INSULATOR	1	BOX	Al/Cu	32031T	7	275	132
	3		Al/Cu	32033T	8		
	1	BOX	Cu*	32051T	7	275	132
	3		Cu*	32053T	8		
400 PHENOLIC INSULATOR	1	BOX	Al/Cu	34031T	9	600	228
	3		Al/Cu	34033T	10		
	1	BOX	Cu*	34051T	9	375	228
	3		Cu*	34053T	10		
600 PHENOLIC INSULATOR	1	BOX	Al/Cu (2) 600 kcmil-#2	36031T	11	600	360
	1	BOX	Cu* (2) 600 kcmil-#2	36051T	11	375	360

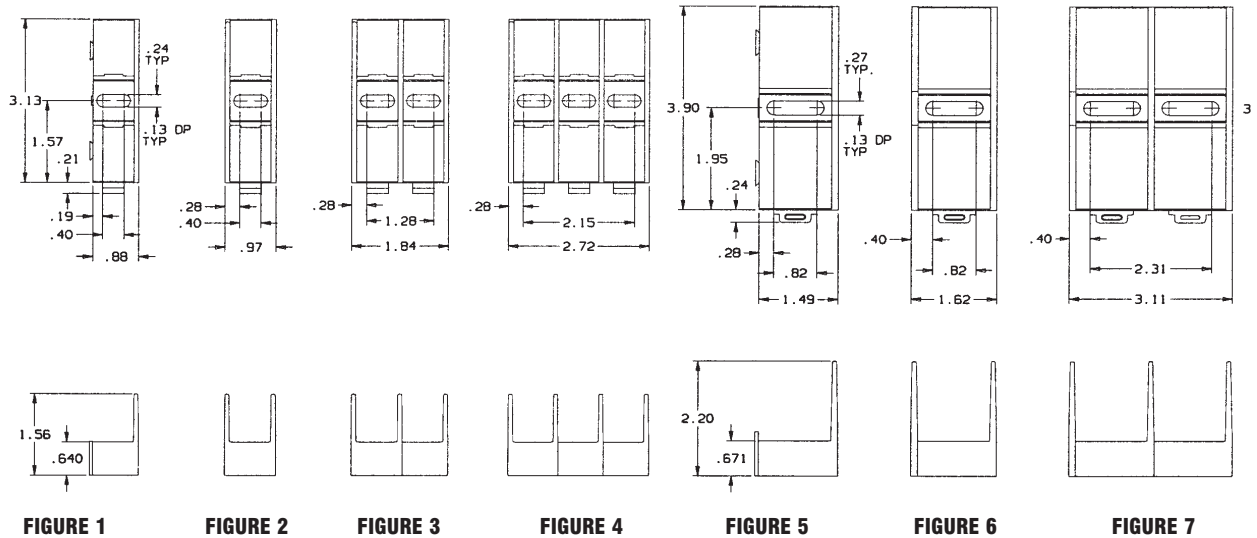
† Note: Height includes nominal fuse blade thickness

Recommended base mounting screws:  
100A & 200A, #10 (.190" dia.)  
400A & 600A, 1/4" (.250" dia.)

**Note:** \* Fuse blocks have copper box connectors and are for copper wires only. These are specifically designed with the same coefficient of expansion as copper wire for improved heat cycling and meet or exceed OEM "no aluminum" specifications.

# CLASS T

## 600 VOLT/FUSE BLOCKS



### 600 Volt, 30 & 60 Ampere Class T Fuse Blocks

AMPERE RATING	POLES	CONNECTOR		CATALOG NUMBER	FIG.	CONNECTOR TORQUE In - lb
		TYPE	WIRE RANGE			
30 GFPC INSULATOR	ADDER	BOX	Al/Cu #2-14	60305T	1	35
	1			60306T	2	
	2			60307T	3	
	3			60308T	4	
	ADDER	SCREW	Cu #10-14	60315T	1	20
	1			60316T	2	
	2			60317T	3	
	3			60318T	4	
	ADDER	PRESSURE PLATE	Cu #10-14	60325T	1	20
	1			60326T	2	
	2			60327T	3	
	3			60328T	4	
ADDER	BOX	Cu* #4-14	60355T	1	35	
1			60356T	2		
2			60357T	3		
3			60358T	4		
60 GFPC INSULATOR	ADDER	SCREW	Cu #10-14	60615T**	5	20
	1			60616T**	6	
	2			60617T**	7	
	3			60618T**	8	
	ADDER	BOX	Al/Cu #2-14	60605T	5	45
	1			60606T	6	
	2			60607T	7	
	3			60608T	8	
	ADDER	BOX	Cu* #4-14	60655T	5	45
	1			60656T	6	
	2			60657T	7	
	3			60658T	8	

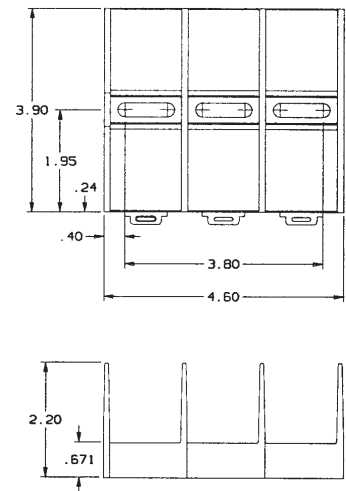


FIGURE 8

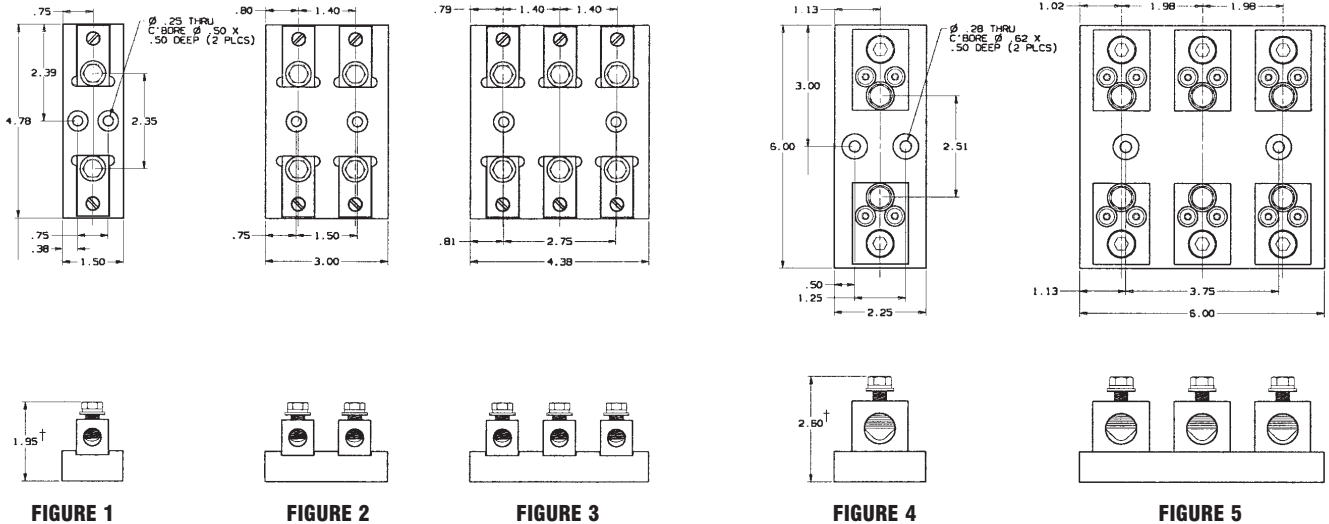
Recommended mounting screws:  
30A, #10 (.190" dia.)  
60A, 1/4" (.250" dia.)

**Note:** \* Fuse blocks have copper box connectors and clips and are for copper wires only. These are specifically designed with the same coefficient of expansion as copper wire for improved heat cycling and meet or exceed OEM "no aluminum" specifications.

\*\* UL Component Recognized

# CLASS T

# 600 VOLT/FUSE BLOCKS

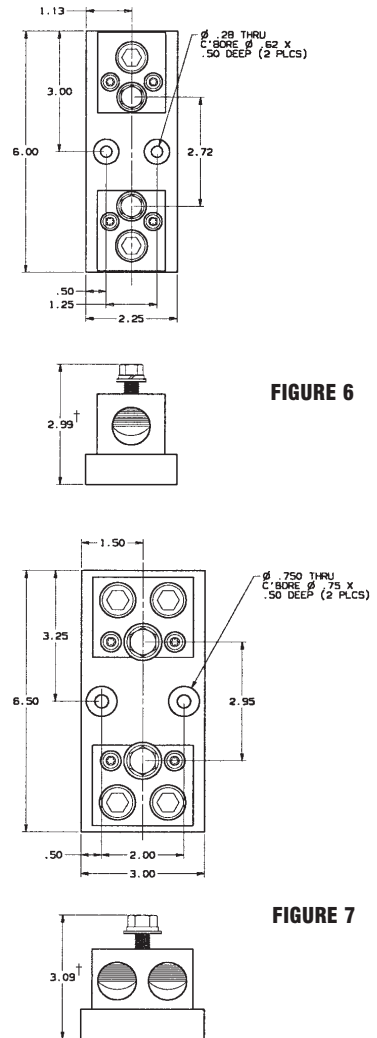


Recommended base mounting screws:  
 100A & 200A, #10 (.190" dia.)  
 400A & 600A, 1/4" (.250" dia.)

## 600 Volt, 100, 200, 400 & 600 Ampere Class T Fuse Blocks

AMPERE RATING	POLES	CONNECTOR		CATALOG NO.	FIG.	TORQUE (IN-LBS)			
		TYPE	WIRE RANGE			SPRING REINFORCED	CONNECTOR	FUSE BOLT	
100 PHENOLIC INSULATOR	1	BOX	Al/Cu	61031T	1	120	72		
	2		2/0-#6	61032T	2				
	3		61033T	3					
200 PHENOLIC INSULATOR	1	BOX	Cu*	61051T	1	50	72		
	2		2/0-#12	61052T	2				
	3		61053T	3					
400 PHENOLIC INSULATOR	1	BOX	Al/Cu	62031T	4	275	132		
	3		350 kcmil-#6	62033T	5				
	1		Cu*	62051T	4			275	132
3	350 kcmil-#6	62053T	5						
600 PHENOLIC INSULATOR	1	BOX	Al/Cu	64031T	6	600	228		
	1		600 kcmil-#2	64051T	6			375	228
	1		Cu*	66031T	7				
1	BOX	(2) 600 kcmil-#2	66051T	7	375	228			
1	BOX	(2) 600 kcmil-#2	66051T	7			375	228	

**Note:** \* Fuse blocks have copper box connectors and are for copper wires only. These are specifically designed with the same coefficient of expansion as copper wire for improved heat cycling and meet or exceed OEM "no aluminum" specifications.



† Note: Height includes nominal fuse blade thickness