



DC RATED FOR TOUGH DC APPLICATIONS

The Tri-onic® DC fuse series is designed for DC circuit protection in surface and underground mines. The TRS-RDC is MSHA approved and meets the industry's most severe third party requirements for 600VDC rated fuses.

B

The TRS-RDC is a time-delay fuse with essentially the same time-current characteristic as the standard Tri-onic®.

Features/Benefits

- **DC rated** for mine duty and other long time-constant applications
- **Time delay** for motor start-ups and high inrush loads without nuisance opening
- **Rugged glass melamine body** for superior
- **Reliability** in harsh environments

HIGHLIGHTS:

- Time Delay
- DC Rated

APPLICATIONS:

- Mine Circuits
- Trailing Cables
- Pump Motors
- Rail Heaters

Ratings

- **DC:** 1 to 30A
300VDC, 20kA I.R.
(Consult Factory for Availability)
- **DC:** 35 to 400A
600VDC, 20kA I.R.

Approvals

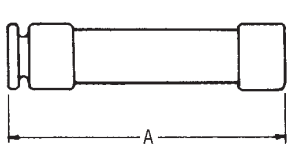
- MSHA Approval
No. 28-26-0

TIME DELAY/600VDC FUSES

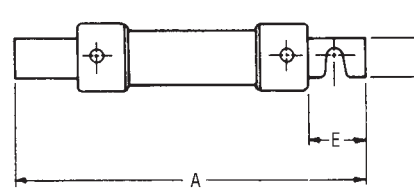
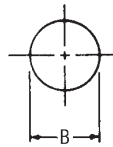
TRS-RDC

Standard Fuse Ampere Ratings, Catalog Numbers

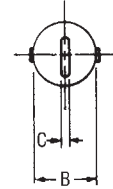
AMPERE RATING	CATALOG NUMBER	AMPERE RATING	CATALOG NUMBER	AMPERE RATING	CATALOG NUMBER	AMPERE RATING	CATALOG NUMBER	AMPERE RATING	CATALOG NUMBER
1/10	TRS1/10RDC	1-1/4	TRS1-1/4RDC	3-1/2	TRS3-1/2RDC	12	TRS12RDC	70	TRS70RDC
15/100	TRS15/100RDC	1-4/10	TRS1-4/10RDC	4	TRS4RDC	15	TRS15RDC	80	TRS80RDC
2/10	TRS2/10RDC	1-6/10	TRS1-6/10RDC	4-1/2	TRS4-1/2RDC	17-1/2	TRS17-1/2RDC	90	TRS90RDC
3/10	TRS3/10RDC	1-8/10	TRS1-8/10RDC	5	TRS5RDC	20	TRS20RDC	100	TRS100RDC
4/10	TRS4/10RDC	2	TRS2RDC	5-6/10	TRS5-6/10RDC	30	TRS30RDC	125	TRS125RDC
1/2	TRS1/2RDC	2-1/4	TRS2-1/4RDC	6	TRS6RDC	35	TRS35RDC	150	TRS150RDC
6/10	TRS6/10RDC	2-1/2	TRS2-1/2RDC	6-1/4	TRS6-1/4RDC	40	TRS40RDC	175	TRS175RDC
8/10	TRS8/10RDC	2-8/10	TRS2-8/10RDC	8	TRS8RDC	45	TRS45RDC	200	TRS200RDC
1	TRS1RDC	3	TRS3RDC	9	TRS9RDC	50	TRS50RDC	250	TRS250RDC
1-1/8	TRS1-1/8RDC	3-2/10	TRS3-2/10RDC	10	TRS10RDC	60	TRS60RDC	300	TRS300RDC
								400	TRS400RDC



0-60 Amperes



61-400 Amperes



Dimensions

AMPERE RATING	A		B		C		D		E	
	In.	mm	In.	mm	In.	mm	In.	mm	In.	mm
0-30	5	127	13/16	21	-	-	-	-	-	-
31-60	5-1/2	139	1-1/16	27	-	-	-	-	-	-
61-100	7-7/8	200	1-5/16	34	1/8	3	3/4	19	1	25
101-200	9-5/8	244	1-13/16	46	3/16	5	1-1/8	28	1-3/8	35
201-400	11-5/8	295	2-9/16	66	1/4	6	1-5/8	41	1-7/8	48

TRS-RDC60 TO 400

